



Lund Cathedral Visitor Centre, Sweden; Architect: Carmen Izquierdo.

04.2014

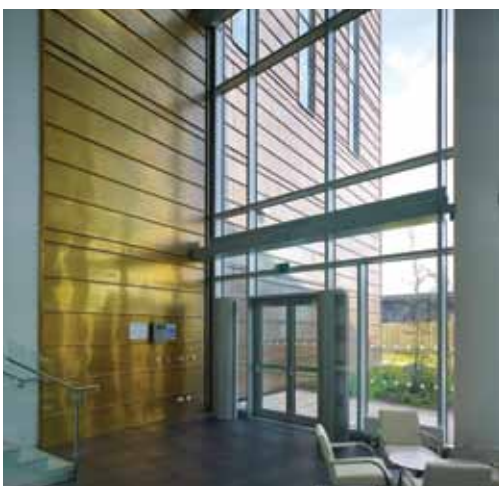
Nordic Brass – copper alloy

Nordic Brass is an alloy of copper and zinc with a distinctive golden yellow colour. When exposed to the atmosphere, the surface begins to darken within weeks and can change to a dark brown in around a year – unlike Nordic Royal™ alloy which retains its original colour. It is also available with a pre-weathered surface.

Nordic Brass is available in sheets or coils.

- ▶ Thickness range: 0.6 – 2.0 mm
- ▶ Maximum width: 1000 mm.

It can also be provided in a wide range of different forms and used in various systems.



Roslin Institute, Scotland; Architects: HDR.



Nordic Brass Pre-weathered Nordic Brass